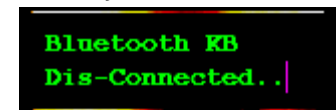
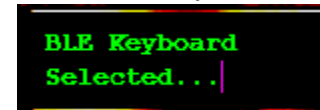
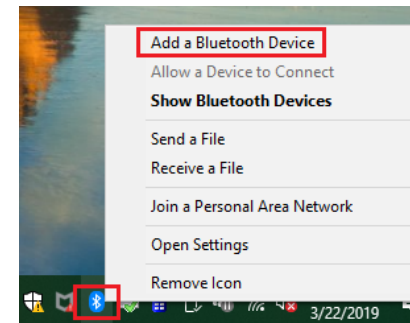


MiniTerm 908 BT-Keyboard For Windows 8, 10, 11

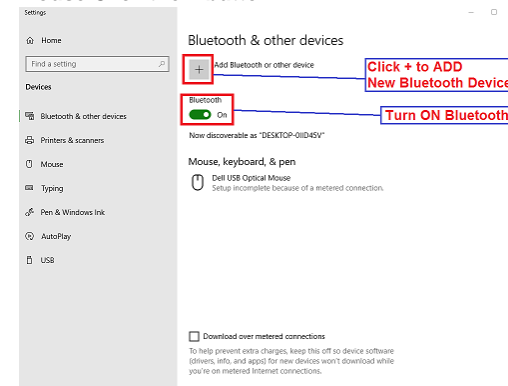
- Turn the Power switch On the back of the pinpad “ON”
- The Miniterm 908-BTK should power up and display several messages
- The final LCD message will read “Bluetooth KB Dis-Connected..”
- You are now ready to “PAIR” the 908-BTK to your PC.



- Mouse Click the Bluetooth icon
- Select “Add a Bluetooth Device”

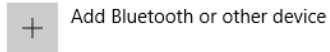


- Make sure Bluetooth is ON
- Mouse Click the + button

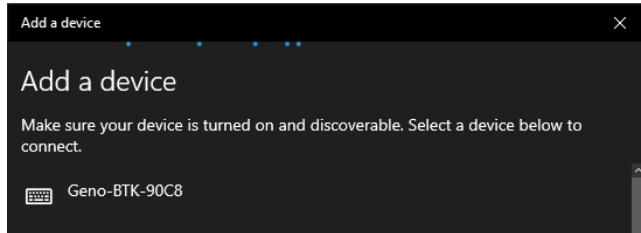


- **Mouse Click the Add Mice, Keyboard, etc. option**

Bluetooth & other devices



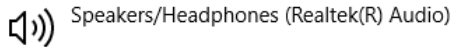
- **Mouse Click the Device named "Geno-BTK-xxxx"**



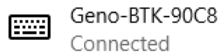
- **Windows will connect and MiniTerm will BEEP several times until "CONNECTED"**
- **Once BEEP stops, CLOSE the ADD Window**
- **Bluetooth & other devices Window should show MiniTerm is CONNECTED**

Bluetooth & other devices

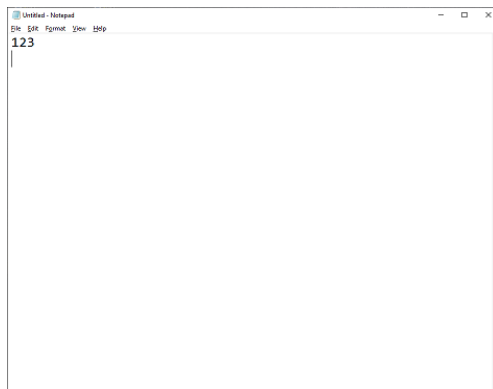
Audio



Other devices



- **Run Windows NOTEPAD and test MiniTerm**



NOTE:

The 908-BTK pinpad is "PAIRED" and "UNPAIRED" by the computer directly.

Once the 908-BTK pinpad is "PAIRED", you must "UNPAIR" it before you can "PAIR" it to another PC.

Battery Operation:

- Only use the Genovation provided power adaptor to charge.
- When charging, the Charge Status LED will be a "Orange" color.
- When fully charged, the Charge Status LED will be a "Green" color.
- When the battery is LOW, the RED LED on the 908-BTK will be ON and will "BEEP" every 2 minutes to ALERT the user to charge.

NOTE:

The 908-BTK-S model includes a built-in barcode scanner and it will operate for 8 hours continuously after a full charge.

The 908-BTK RED LED will turn ON when there is less than 50% battery charge.

Bluetooth Specifications:

- Bluetooth Low-Energy 4.0 Compatible
- Range = 30ft, 10m
- Frequency band 2.4GHz ISM (2.40000 – 2.4835GHz)
- On-air data rate 250 kbps, 1 Mbps or 2 Mbps
- Modulation GFSK
- Output power Programmable: +4 to -20dBm in 4dB steps
- Sensitivity -93dBm Bluetooth low energy
- -96dBm at 250kb
- -90dBm at 1Mbs
- -85dBm at 2Mbs

Battery Specifications:

- Lithium ION 3400mAh
- Up to 20 hours continuous Operation
- Charge Time Approx. 5hrs.
- AC Wall Charger provided, 5vdc 1a minimum

For questions, please contact our Technical Support department:

Telephone: (949) 833-3355 (ext.115)

Email: support@genovation.com