



17741 MITCHELL NORTH, IRVINE CALIFORNIA 92614 USA  
PHONE: (949) 833-3355 FAX: (949) 833-0322  
INTERNET: <http://www.genovation.com>  
Email: [support@genovation.com](mailto:support@genovation.com)

## TravelBoard Keyboard



## User Manual

**For Windows 95/98, NT4, 2000, ME, XP**

---

**Copyright © 2001, Genovation, Inc.**

Manual Last Updated December 4, 2001

## NOTICE

Copyright © 2001, Genovation, Inc. All rights reserved. No part of this document may be photocopied, transmitted or reproduced in any form without prior written consent from Genovation, Inc.

Genovation, Inc. reserves the right to revise this documentation and to make changes in content from time to time without obligation on the part of Genovation, Inc. to provide notification of such revision or changes.

GENOVATION, INC. SHALL NOT BE LIABLE FOR TECHNICAL OR EDITORIAL ERRORS OR OMISSIONS HEREIN; NOR FOR INCIDENTAL OR CONSEQUENTIAL DAMAGES RESULTING FROM THE FURNISHING, PERFORMANCE, OR USE OF THIS MATERIAL OR ACCOMPANYING SOFTWARE.

Product names mentioned in this document may be trademarks and/or registered trademarks of other companies.  
"Palm", "Palm OS", and "HotSync" are registered trademarks of Palm, Inc.  
"Windows" is a registered trademark of Microsoft Corporation.

For the latest version of this document, visit  
<http://www.genovation.com>

## Introduction

The Genovation TravelBoard Keyboard is designed to offer you the best possible control of your PalmOS<sup>a</sup> PDA. Using our embedded Mouse technology, you will have complete control over the PDA without ever having to use the stylus!

### System Requirements

- IBM<sup>®</sup> Compatible PC running Windows<sup>®</sup> 95/98/2000/ME/NT 4.0 or XP
- Palm<sup>™</sup> or Handspring<sup>™</sup> PDA – PalmOS<sup>®</sup> Version 3.0 or above.
- Palm Desktop software (for installing the PRC).

### Before You Begin

Before you install your TravelBoard software (PRC file), make sure you have already installed the Palm Desktop software and performed at least one HotSync with your PDA. The latest version of the Palm Desktop can be downloaded at [www.palm.com](http://www.palm.com) or [www.handspring.com](http://www.handspring.com).

## Installation

To install the driver on your handheld insert the floppy disk supplied with your TravelBoard into the 3 ½ floppy drive on your PC. From the Windows Start Menu choose Run and then type

A:TravelBoard.prc

and then click on OK. The next time you perform a HotSync, the driver will be copied to your handheld.

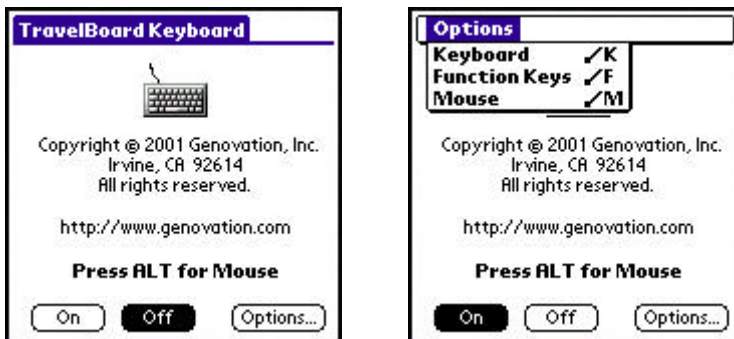


*If your floppy drive is not A;, then substitute the letter assigned to it.*

## Operation

The TravelBoard keyboard provides its own power, supplied by three onboard AAA batteries and will not drain the battery of the PDA. These batteries are not rechargeable. We recommend that you continue to use alkaline batteries such as those supplied with the unit. To change the batteries depress the tab to remove the battery cover, remove the existing batteries, then insert 3 AAA batteries in the direction indicated. Finally, replace the cover.

### 1. General



The driver can be turned on and off from the main application form. Configuration of the driver is accomplished through the Keyboard, Function Keys and Mouse submenus. Press Alt-space to open the menu or click on the title bar or Options button using the mouse. See section (4), Mouse Setup, for instructions on using the keyboard-operated mouse.

### 2. Keyboard Setup (Repeat Rate)

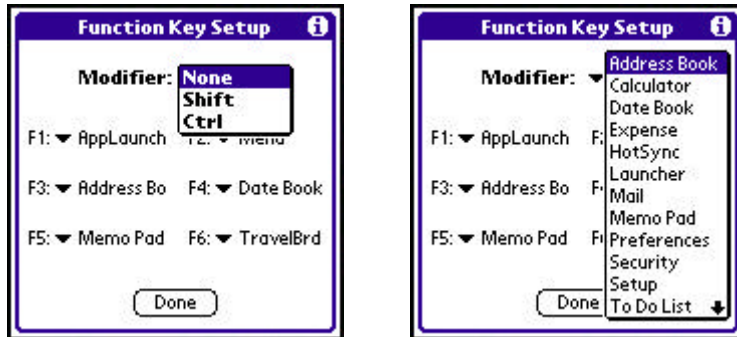


- DELAY until repeat adjusts the amount of time required before a key held down starts repeating. The range is short delay (0) to long delay (5).
- Keyboard repeat RATE determines the rate at which repeating characters are generated. The range is slow (0) to fast (5).
- Turning the key click on produces audible feedback on every keypress.
- Place the cursor in the Test Area and begin typing to check your keyboard settings.

*NOTE: The driver must be turned OFF in order to delete the application or use beaming, but the driver will disable itself to allow for HotSync. Once the HotSync is complete, re-enable the driver.*

### 3. Function Keys

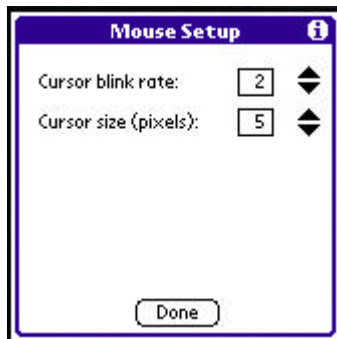
There are 18 programmable function keys available by using F1 through F6 alone or in combination with Shift or Ctrl. The default settings are shown in the table at the end of this document.



Use this form to assign operations to the 18 programmable function keys:

- With the MODIFIER set to NONE, select the operation for the un-shifted F1 to F6 keys.
- With the MODIFIER set to SHIFT, select the operation for Shift-F1 to Shift-F6.
- With the MODIFIER set to CTRL, select the operation for Ctrl-F1 to Ctrl-F6.
- The pop-up list shows available applications followed by available screen buttons. The buttons are displayed in all UPPERCASE letters.

### 4. Mouse Setup



The mouse is activated by holding down the ALT key and can be moved using the arrow keys. To "click" the mouse use ALT-RETURN.

- Cursor Blink Rate adjusts the flashing of the cursor from off (0) to fast (15).
- Cursor Size adjusts the cursor block from small (3 pixels square) to large (10 pixels square).
- The speed of the mouse is controlled by the Keyboard Repeat and Delay settings.

#### 4. Keyboard Commands and Character Table

##### Summary of modifier key roles:

- **Option** – Generates international and special characters (see table).
- **Ctrl** – Used for text editing (copy, cut, paste, etc. plus additional cursor move commands).
 

Copy	Ctrl-C
Cut	Ctrl-X
Paste	Ctrl-V
Select-All	Ctrl-A
Undo	Ctrl-Z
Page Up	Ctrl-Up Arrow (can also use Ctrl-D)
Page Down	Ctrl-Down Arrow (can also use Ctrl-U)
- **Alt** – Issues commands (launch apps, find, backlight, menu, mouse).
 

Space	Menu open/close (the use letter key to select an item)
Up	Mouse up
Down	Mouse down
Left	Mouse Left
Right	Mouse Right
Return	Mouse Click
Letter	Run specific applications (see table)
- **Ctrl+Alt+Letter** – Selects on-screen buttons (activate any button starting with that letter). If there is more than one button starting with the same letter, use the mouse to select the one not available using the Ctrl+Alt+Letter combination.

Key / Shifted	Option / Shifted	Ctrl	Alt
F1 / Shift-F1		Ctrl-F1	
F2 / Shift-F2		Ctrl-F2	
F3 / Shift-F3		Ctrl-F3	
F4 / Shift-F4		Ctrl-F4	
F5 / Shift-F5		Ctrl-F5	
F6 / Shift-F6		Ctrl-F6	

Key / Shifted	Option / Shifted	Ctrl	Alt
1 !	<sup>1</sup> ±		F1
2 @	<sup>2</sup> ½		F2
3 #	<sup>3</sup> ¾		F3
4 \$	• ¼		F4
5 %	Shortcut <i>u</i>		F5
6 ^	™		F6
7 &	® Feminine		
8 *	© Masculine		
9 (	¢ ¶		
0 )	Euro ¤		
- _	¥ ¬		
= +	£ ·		
BS / DEL		DEL	

Key / Shifted	Option / Shifted	Ctrl	Alt
Tab / Back 5		Prev/Next Field	
q Q	á Á		
w W	à À		
e E	ä Ä		E-mail
r R	â Â		To Do List
t T	å Å		
y Y	ã Ã		
u U	æ Æ	PgUp	
i I	ç Ç		
o O	ñ Ñ		
p P	ø Ø		Preferences
[ {	«		
] }	»		
\			

Key / Shifted	Option / Shifted	Ctrl	Alt
CapsLock			
a A	é É	Select all	Address Book
s S	è È		Security
d D	ë Ë	PgDn	Date Book
f F	ê Ê		Find
g G	í Í		
h H	ì Ì		HotSync
j J	ï Ì		
k K	î Î		
l L	Û		
;;	ÿ Ÿ		
‘ ’	ý Ý		
Return			Mouse Click

Key / Shifted	Option / Shifted	Ctrl	Alt
Left Shift			
z Z	ó Ó	Undo	
x X	ò Ò	Cut	eXpense
c C	ö Ö	Copy	Calculator
v V	õ Ö	Paste	
b B	ō Ō		Backlight
n N	ú Ú		
m M	ù Ú		Memo Pad
, <	ü Ü		
. >	û Û		
/ ?	ı		
Right Shift			
Up / Select Up		Page Up	Mouse Up

Key / Shifted	Option	Ctrl	Alt
Fn			
Ctrl			
Option			
Alt			
Space			Menu Open/Close
~			
Left / Select Left / Next Menu		Back 5 / Sel Prev 5	Mouse Left
Down / Select Dn		Page Down	Mouse Down
Right / Select Right / Previous Menu		Fwd 5 / Sel Next 5	Mouse Right

Key / Shifted	Comment
Done / OK	Ctrl + Alt + RETURN

**NOTES:**

- Address Book – Arrows move up and down list, CR selects the address view.
- Ctrl+Tab and Ctrl+Shift+Tab move to the next and previous fields in applications that support such an operation (ToDo, Mail, etc).
- When the menu is open, left and right arrows move to previous and next menus, respectively.
- Shifted arrow keys hi-light (select) text in the edit window.

6. Default Function Keys

	Normal	Shift	Ctrl
<b>F1</b>	Application Launcher	Cancel button	New button
<b>F2</b>	Menu Open/Close	Done button	Note button
<b>F3</b>	Address Book	Delete button	OK button
<b>F4</b>	Date Book	Details button	Today button
<b>F5</b>	Memo Pad	Edit button	Find dialog
<b>F6</b>	TravelBoard	Go button	Shortcut begin

The 18 programmable function keys can be re-assigned using the PDA. For more information see Section (3), above.

To restore the default function keys, delete the application from the handheld and then re-install the PRC file from disk.