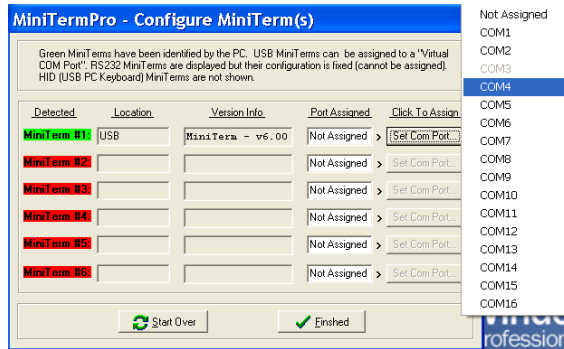


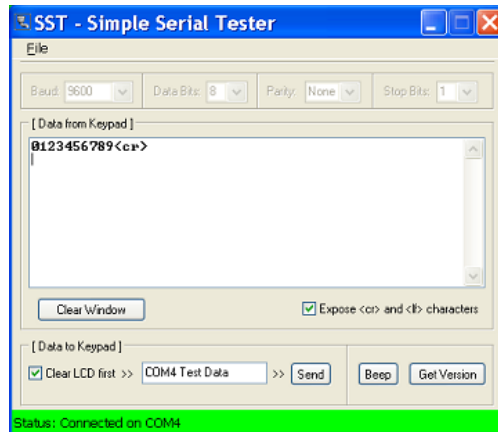
IMPORTANT: The COM port you choose will be tied to the USB jack on your PC, so if you remove your pinpad make sure to re-plug it into the same USB jack. Each USB jack can be assigned a COM port number.



Test Serial COM Ports - Once created, a USB Virtual Serial COM port will function exactly the same as a standard RS-232 true serial port. You can send and receive serial ASCII data between the MiniTerm pinpad and any application that can open a COM port and communicate using this method.

To test a MiniTerm which is set-up a serial COM device, (RS232 or Virtual Serial), use the following steps.

1. Right-click the MiniTermPro Icon in your system tray.
2. Select Test Serial/Virtual Serial from the menu.
3. Verify COM port number and test MiniTerm.



Technical Support and Service

- Telephone: (949) 833-3355 (Hours: 7:00am to 3:30pm PST)
- Fax: (949) 833-0322
- Email: support@genovation.com



GENOVATION^{US}

17741 MITCHELL NORTH IRVINE CALIFORNIA 92614 USA FAX:(949)833-0322 PHONE:(949)833-3355
E-MAIL:mail@genovation.com INTERNET:<http://www.genovation.com>

MiniTerm 900, 904, 905, 906, 907, 910

Fully-Programmable Mini-Terminal Pinpad Series

Quick Start Guide

Revision 7.20

Copyright© 2014, 2015 Genovation, Inc.

Overview

The MiniTerm is a series of fully programmable LCD mini data terminals. There are three basic connection methods: **Serial RS-232**, **USB Virtual Serial**, and **USB HID Keyboard**.

Before installing your hardware you should determine which port, **Serial RS-232** or **USB**, is best for your PC and application.

If you choose **USB**, you will need to determine if your application requires a **Virtual Serial COM Port** for data input or uses a standard **USB HID Keyboard** for data input.

If you need help with your decision, please refer to the documentation provided on the installation CD-ROM or go to Genovation website.

<http://www.genovation.com/miniterminals.htm>

What's in the Box?

- (1) MiniTerm: Fully Programmable Pinpad with LCD Display
- (1) USB cable (Detachable)



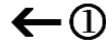
USB Port Set-up

For USB port applications only.

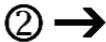


WARNING: To avoid permanent damage, do not plug or unplug from the MiniTerm RJ-45 “telephone style” connection while PC power is ON. Always plug and unplug from the PC USB side of the MiniTerm USB cable.

Miniterm



STEP # 1: Plug the **RJ-45** telephone style connector into the back of the MiniTerm.



STEP # 2: Plug the USB connector side of the cable into your PC's USB port or HUB socket.

USB Mode Select

The MiniTerm can function as a **USB HID Keyboard** or **USB Virtual Serial COM Port** device. You can select either USB mode by accessing the built-in **USB Set-Up Menu**. To enter the **USB Set-Up Menu** and select the USB mode your installation requires, please follow these steps.

USB HID Keyboard Mode

For applications that use standard PC keyboard input.

With **USB HID Keyboard mode**, the MiniTerm 6.0 will function just like any standard USB keyboard.

1. **Press and HOLD any 2 keys** on the MiniTerm 6.0
2. **Plug the USB cable** into your PC or USB HUB
3. **Release the 2 keys** being held down
 - **Press # 2 to select USB HID Keyboard mode.**

You may use NOTEPAD or any other PC application to test the keypad.

Genovation test software is available if you install the Genovation software package (optional/see below).

USB Virtual Serial COM Port Mode

For computers with only USB but still require COM Port connection.

1. **Press and HOLD any 2 keys** on the MiniTerm 6.0
2. **Plug the USB cable** into your PC or USB HUB
3. **Release the 2 keys** being held down
 - **Press # 1 to select USB Virtual Serial COM mode.**

Software Installation - Unless your software indicates otherwise, you must install the Genovation MiniTermPro software. This software makes a USB connected MiniTerm look like an RS-232 to your application software. Next, we will install the software and configure a Virtual COM Port.

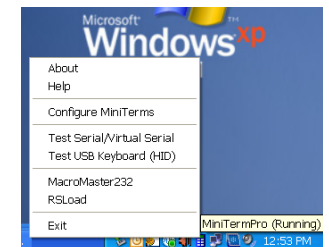
NOTE: MiniTermPro 6.0 is compatible with the following Windows operating systems: 2000 / XP / Vista / Windows7 32-bit and 64-bit.

Insert the CD into the target computer's CD drive. If the installation program does not start immediately, navigate to the CD using Explorer and run “Setup.exe”.

When prompted, choose the type of installation you need, “Simplified” or “Normal”. The default installation is called “Simplified” and will only install the drivers needed to create and manage virtual COM ports. If you wish to program your MiniTerm 6.0 or change the default settings, then you will need to choose the “Normal” installation option, which will install all of the tools needed to program the MiniTerm 6.0.

Configure Software - Right click on the MiniTermPro icon located in the system tray and select **Configure MiniTerms** from the menu.

When the Attention reminder dialog appears, click **OK** to dismiss it. If you have one keypad attached you will then see a screen such as show below. This is how you assign a COM port to the USB keypad.



Pin pads highlighted in GREEN are present, RED pin pads are not attached. For convenience, the pinpad version is shown for any attached MiniTerms and the pinpad itself will display the MiniTerm # and port on it's LCD. Once you assign a port, it will appear in the Port Assigned column. Click on Set COM Port to bring up a list of available options for assigning the Pinpad.