

Technical Support and Service

- Telephone: (949) 833-3355 (Hours: 7:00am to 3:30pm PST)
- Fax: (949) 833-0322
- Email: support@genovation.com

WARRANTY REPAIR SERVICE AND LICENSE

Genovation, Incorporated ("Genovation") warrants this product to be in good working order and free from defects in materials and workmanship under normal use for a period of one year from the date of purchase. Any abuse including opening the case will void the warranty. Your sole remedy and Genovation's entire liability for this product will be repair or replacement as provided for above, or at Genovation's option, the refund of your purchase price. **A RETURN MATERIAL AUTHORIZATION (RMA) number is required before returning a product. Any shipment received without an RMA will be returned unopened. Please contact Customer Service for instructions and shipping cost before returning any product. Returns without an RMA will be returned unopened.**

FCC CERTIFICATION: The Mini-Terminal has been certified to comply with FCC and other test standards. See label on the product for confirmation.

FCC CERTIFICATION REQUIRED STATEMENT WARNING: This equipment has been certified to comply with the limits for a Class B Computing Device, pursuant to Subpart J of Part 15 of the FCC rules. Only peripherals (computer, computer input/output devices, terminals, printers, etc.) certified to comply with the Class B limits may be attached to this device. Operation with non-certified peripherals is likely to result in interference to radio and TV reception.

NOTE: This equipment generates and uses radio frequency energy and if not installed and used properly, that is, in strict accordance with the manufacturer's instructions, may cause interference to radio and television reception. It has been type tested and found to comply with the limits for Class B computing devices in accordance with the specifications in Subpart J of part 15 of the FCC Rules, which are designed to provide reasonable protection against such interference in a particular installation. If this equipment does cause interference to radio or television reception, which can be determined by turning the equipment off or on, the user is encouraged to try to correct the interference by one or more of the following measures:

- * Reorient the receiving antennas
- * Relocate the computer with respect to the receiver
- * Move the computer away from the receiver
- * Plug the computer and receiver into different circuits

If necessary, the user should consult the dealer or an experienced radio/television technician for additional suggestions. The user may find the following booklet prepared by the Federal Communications Commission helpful: "How to identify and Resolve Radio-TV Interference Problems". This booklet is available from the U.S. Government Printing Office, Washington, DC 20402.

GENOVATION

17741 MITCHELL NORTH IRVINE CALIFORNIA 92614 USA FAX: (949)833-0322 PHONE: (949)833-3355
E-MAIL: mail@genovation.com INTERNET: <http://www.genovation.com>

MiniTerm 900/904

Fully-Programmable Mini-Terminal Pinpad Series

Quick Start Guide



MiniTerminal
904

MiniTerminal
900

Revision 4.0
Copyright© 2005, 2007 Genovation, Inc.

Software Installation:

Insert the CD into the target computer's CD drive. If the installation program does not start immediately, navigate to the CD using Explorer and run "Setup.exe".

Click on **Next** as required and choose the path you would like to use for storing the PC applications. Click **Install** and **Next** to copy the files to your computer from the CD.

Hardware Installation:

The MiniTerm 900/904 and higher series includes (1) serial RS232 cable, and a power adaptor, plus (1) USB cable for USB installations. You will need to determine which port, serial or USB, is best for your installation.

RS232 Serial Port Set-up:

For standard RS232 Serial COM ports only.



1. Plug the serial cable into the back of the MiniTerm 900/904 using the RJ-45 plug, and connect the other side of the cable into an open COM port on the back of your PC.
2. Run the MacroMaster program.
3. Click on: Start >> Programs >> Genovation >> MiniTermPro v4.0 >> MacroMaster232.exe
4. Click on the TEST button, select your COM port & OPEN.
5. You can now test your MiniTerm pinpad.

USB Port Set-up:

For USB port applications only.

Right click on the MiniTermPro icon located in the system tray and select **Configure MiniTerms** from the context menu.



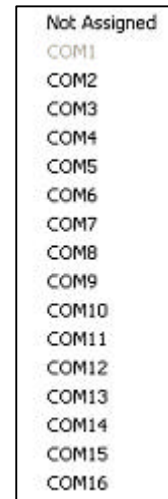
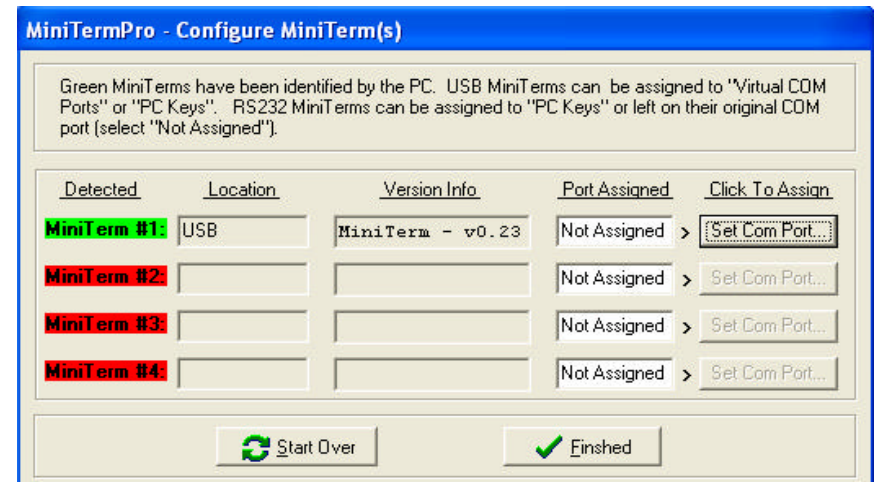
When the **Attention** reminder dialog appears, click **OK** to dismiss it. If you have one keypad attached you will then see a screen such as show below. This is how you assign a COM port to the USB keypad.



IMPORTANT: The COM port you choose will be tied to the USB jack on your PC, so if you remove your pinpad make sure to re-plug it into the same USB jack. Each USB jack can be assigned a COM port number.

Pinpads highlighted in **green** are present, **red** pinpad are not attached. For convenience, the pinpad version is shown for any attached MiniTerms and the pinpad itself will display the

MiniTerm # and port on it's LCD. Once you assign a port, it will appear in the Port Assigned column. Click on **Set Com Port** to bring up a list of available options for assigning the Pinpad.



COM ports that are in use or not available for assignment (for example they are used by the motherboard COM ports or a modem) are shown in gray. You may select any port that is not grayed out. **Not Assigned** allows you to free a port that you have previously committed. Once you have made your selection, click **Finished**. If at any time you wish to erase your commitments or search for new pinpads, click **Start Over**.

Test MiniTerms:

Right click on the MiniTermPro icon in the system tray again, and this time select **Test MiniTerms**. If you have assigned PC Keys, then Notepad will open and you can enter data on your MiniTermPro pinpad as if it were a PC keyboard. If you selected a COM port, then SST (Simple Serial Tester) will open already connected to your pinpad. Enter data on the MiniTermPro pinpad to verify correct operation.